

Fill
polyester body filler



Area of application: For filling deep dents, also on vertical surfaces.
Characteristic features: Filler with high viscosity and optimum filling performance for easy sanding.

| Part-no. | Size | Units |
|----------|------------------------------|-------|
| 130.842 | 1 kg tin incl. harder | 6 |
| 127.971 | 2 kg tin incl. harder | 6 |
| 134.027 | 3 kg cartridge incl. harder | 6 |
| 134.028 | 10 kg cartridge incl. harder | 2 |

Soft
polyester body filler



Area of application: For filling deep dents, ideally suited for large areas.
Characteristic features: Soft filler with high viscosity and optimum filling performance for very easy sanding.

| Part-no. | Size | Units |
|----------|-------------------------------|-------|
| 130.853 | 0,9 kg tin incl. harder | 6 |
| 127.972 | 1,8 kg tin incl. harder | 6 |
| 132.116 | 2,6 kg cartridge incl. harder | 6 |
| 133.206 | 8,9 kg cartridge incl. harder | 2 |

Metallic
polyester body filler



Area of application: For filling dents.
Characteristic features: Filler with high-density aluminium content for easy sanding.

| Part-no. | Size | Units |
|----------|-----------------------|-------|
| 130.852 | 1 kg tin incl. harder | 6 |
| 127.911 | 2 kg tin incl. harder | 6 |

Steel
polyester body filler



Area of application: For filling car body edges, mud-guards and PU-bonded panels as well as for repairing filler necks, corners of doors and exterior mirrors.
Characteristic features: Filler with a very high degree of hardness.

| Part-no. | Size | Units |
|----------|-------------------------|-------|
| 138.587 | 0,9 kg tin incl. harder | 6 |

Glaz
polyester fibreglass reinforced filler



Area of application: For filling very deep dents and repairing small rusty areas.
Characteristic features: Glassfibre filler with direct adhesion to sheet steel.

| Part-no. | Size | Units |
|----------|-------------------------|-------|
| 130.854 | 1,0 kg tin incl. harder | 6 |
| 127.974 | 1,8 kg tin incl. harder | 6 |

Elastic weiss
polyester fine filler white



Area of application: For filling imperfections and shallow dents. Provides a smooth non porous surface.
Characteristic features: Elastic filler which can also be used, due to its thixotropic properties, to fill deeper dents. The fine dents filler ensures a low abrasive consumption. Very easy sanding.

| Part-no. | Size | Units |
|----------|------------------------------|-------|
| 130.856 | 1 kg tin incl. harder | 6 |
| 127.975 | 2 kg tin incl. harder | 6 |
| 132.115 | 3 kg cartridge incl. harder | 6 |
| 132.723 | 10 kg cartridge incl. harder | 2 |

Elastic beige
polyester fine filler beige



Area of application: For filling imperfections and shallow dents. Provides a smooth non porous surface.
Characteristic features: Elastic filler which can also be used, due to its thixotropic properties, to fill deeper dents. The fine dents filler ensures a low abrasive consumption. Very easy sanding.

| Part-no. | Size | Units |
|----------|------------------------------|-------|
| 130.855 | 1 kg tin inkl. harder | 6 |
| 127.976 | 2 kg tin inkl. harder | 6 |
| 128.214 | 3 kg cartridge incl. harder | 6 |
| 134.026 | 10 kg cartridge incl. harder | 2 |

Multi
polyester multi-function filler



Area of application: For universal use as a filler on all sheet metal substrates or for repairing galvanized and aluminium car bodies. One product for all types of use.
Characteristic features: Elastic multi-function filler with good adhesive properties.

| Part-no. | Size | Units |
|----------|-------------------------------|-------|
| 130.857 | 1,0 kg tin | 6 |
| 127.977 | 2,0 kg tin inkc. harder | 6 |
| 132.214 | 2,9 kg cartridge incl. harder | 6 |
| 128.145 | 9,7 kg cartridge incl. harder | 2 |

Multi Soft
multi-purpose polyester putty



Area of application: For universal use as a filler or filler on all sheet metal substrates or for repairing galvanized and aluminium car bodies. One product for all types of use.

Characteristic features: Elastic putty with good adhesive properties. Can also be used as a filler due to its thixotropic properties. The fine dense filler ensures a low abrasive consumption. Very easy sanding.

| Part-no. | Size | Units |
|----------|---------------------------------|-------|
| 137.206 | 2,0 kg tin incl. hardener | 6 |
| 138.601 | 2,9 kg cartridge incl. hardener | 6 |
| 138.192 | 9,7 kg cartridge incl. hardener | 2 |

Spray
polyester spray filler



Area of application: For filling surface imperfections over large areas, pinholes and sanding marks.

Characteristic features: Fast-drying 2-component polyester spray filler for very easy sanding.

| Part-no. | Description | Size | Units |
|----------|----------------------|------------|-------|
| 127.978 | incl. hardener | 1,5 kg tin | 6 |
| 124.315 | Spray-filler thinner | 1,0 l tin | 1 |

Flex
polyester contour filler for plastics



Area of application: For repairing small scratches and imperfections in plastic components.

Characteristic features: Contour filler for plastics.

| Part-no. | Size | Units |
|----------|-------------------------|-------|
| 134.796 | 1 kg tin incl. hardener | 6 |

NC-Kombi
1-K Fine Filler



Area of application: For filling small imperfections such as stone chip damage.

Characteristic features: Fine stopper nitro cellulose based.

| Part-no. | Size | Units |
|----------|-----------------|-------|
| 126.052 | 100 g tin | 24 |
| 124.480 | 250 g cartridge | 12 |

Top
polyester coating filler



Area of application: For filling sanding marks and putting curves, edges and corners.

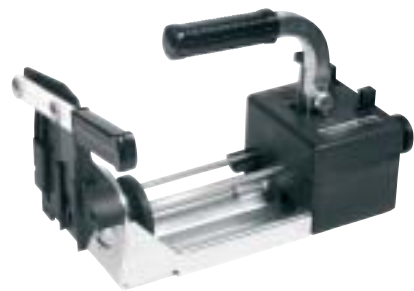
Characteristic features: Apply with a brush.

| Part-no. | Size | Units |
|----------|---------------------------|-------|
| 127.912 | 1,5 kg tin incl. hardener | 6 |



Stuccomatic

filler metering and mixing device – manual



Area of application: Precise measuring of polyester filler und hardener in order to ensure the correct mixture ratio. The amount of hardener to be added can be adjusted.

Characteristic features: Mobile, handy device for 1.5 kg cartridges. Manual operation.

| Part-no. | Size | Units |
|----------|---------------|-------|
| 128.293 | 850 / 1250 ml | 1 |

Dualmatic

filler metering and mixing device – manual



Area of application: Precise measuring of polyester filler und hardener in order to ensure the correct mixture ratio. The amount of hardener to be added can be adjusted.

Characteristic features: Mobile, handy device for 3 kg cartridges. Manual operation.

| Part-no. | Weight | Units |
|----------|--------|-------|
| 123.892 | 3 kg | 1 |

Dispenser

filler metering and mixing device – pneumatic



Area of application: Precise measuring of polyester filler und hardener. Dispenser with optimum ease of use. The correct mixture ratio is ensured by pre-defined amounts of hardener to be added.

Characteristic features: Robust, stationary device to be mounted on the wall. Pneumatic operation.

A3C = for 3 kg cartridges
A10C = for 10 kg cartridges

| Part-no. | Description | Units |
|----------|---------------------------------|-------|
| 123.859 | A 3C | 1 |
| 123.840 | A 10C | 1 |
| 136.912 | replacement-part kit A 3C/A 10C | 1 |

Putty Knife

steel spreader



Area of application: Steel spreader with a solvent resistant plastic handle.

| Part-no. | Width | Units |
|----------|--------|-------|
| 137.435 | 60 mm | 12 |
| 137.436 | 80 mm | 12 |
| 137.437 | 100 mm | 12 |

Plastikspachtel

plastic spreader



Area of application: Unbreakable and solvent-resistant plastic spreader, width of 12 cm

| Part-no. | Colour | Width | Units |
|----------|--------|--------|-------|
| 125.503 | black | 120 mm | 25 |

Blacky

rubber spreader

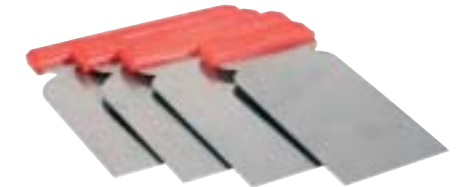


Area of application: Solvent resistant rubber spreader for use with polyester fillers

| Part-no. | Dimension | Units |
|----------|----------------|-------|
| 137.433 | 100 mm x 60 mm | 10 |
| 137.434 | 80 mm x 50 mm | 10 |

Japanspachtel

japanese putty knife



Area of application: Unbreakable steel spreader Set with 4 different widths (5, 8, 10 and 12 cm).

| Part-no. | Units |
|----------|-------|
| 139.356 | 1 Set |

Polyester-Reparaturset

polyester repair set



Area of application: For repairing rust holes and GRP components.

Contents: Polyester resin, hardener and glassfibre cloth.

| Part-no. | Size | Units |
|----------|-----------|-------|
| 126.047 | 250 g Set | 12 |
| 126.054 | 800 g Set | 12 |

Polyester-Reparaturharz

polyester repair resin



Area of application: Polyester resin for use with glassfibre cloth, glassfibre mats and glassfibre surface tissues when repairing rust holes and GRP components.

| Part-no. | Size | Units |
|----------|--------|-------|
| 126.049 | 500 g | 12 |
| 126.050 | 1000 g | 6 |

30 CARSYSTEM® Putties/Fillers

Glasgewebe glassfibre cloth



Area of application: For repairing rust holes in non-load bearing components. For use with polyester repair resin.

| Part-no. | Size | Units |
|----------|--------------------|-------|
| 125.425 | 0,5 m ² | 12 |
| 125.426 | 1,0 m ² | 12 |

Glasmatte glassfibre mat



Area of application: For repairing rust holes in non-load bearing components. For use with polyester repair resin.

| Part-no. | Size | Units |
|----------|--------------------|-------|
| 125.423 | 0,5 m ² | 12 |
| 125.424 | 1,0 m ² | 12 |

Glasvlies glassfibre surface-tissue



Area of application: For reinforcing and smoothing GRP surfaces. For use with polyester repair resin.

| Part-no. | Size | Units |
|----------|--------------------|-------|
| 125.421 | 0,5 m ² | 12 |
| 125.422 | 1,0 m ² | 12 |

Alu-Reparaturgitter aluminium repair mesh



Area of application: For repairing rust holes; can be bend and shaped to the contour of the part to be repaired. For use with fibreglass filler.

| Part-no. | Dimension | Units |
|----------|------------|-------|
| 126.041 | 25 x 20 cm | 12 |